



# CLEARPASS

HIGH THROUGHPUT X-RAY  
INSPECTION SYSTEM WITH  
AI ASSISTANT AND  
EXTRAORDINARY  
DETECTION CAPABILITY



## KEY FEATURES

- Superior high quality images
- Fastest scan time in the industry
- Contraband detection software
- Static screening
- ANSI/HPS N43.17-2009
- Wheelchair friendly

CLEARPASS Full Body X-ray Scanner from LINEV Systems answers the calls and demands of Corrections, Transportation and Customs and Border Protection professionals for a compact scanning technology with advanced, high-resolution imaging performance and advanced detection capabilities.

The inspected person in CLEARPASS remains stationary and the bodyscanner provides industrie's fastest image aquisition time of 3 seconds.

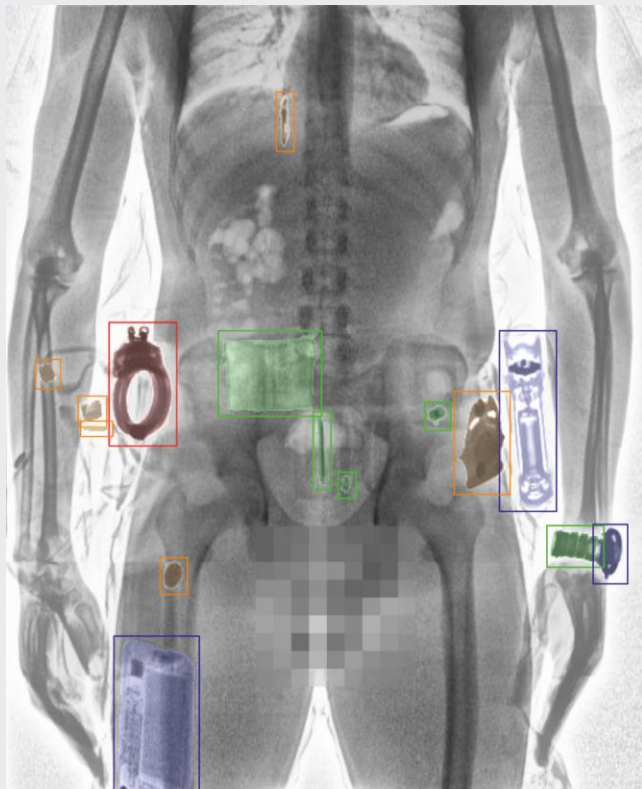
This new revolutionary X-ray inspection system is rugged, fast, and non-contact! The unique pass-through design and prison-proven LINEV Systems exclusive automatic threat detection algorithms facilitate the rapid, non-intrusive inspection of people attempting to conceal contraband items on or inside their bodies.

# CLEARPASS

## OPTIONS

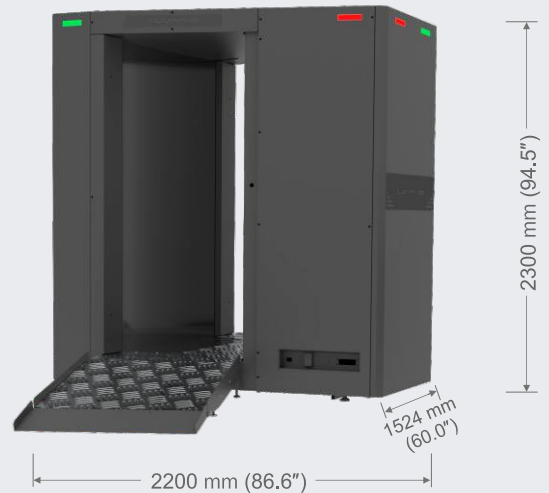
- low radiation dose (from 0.25  $\mu$ Sv), allowing multiple inspections of one person within a year
- use of A-EYE software - artificial intelligence system for automatic detection and classification of objects located inside and on the human body
- high quality and information content of the image
- high detection capacity
- high throughput
- integration into existing infrastructure, integration with access control systems and databases
- a wide range of image processing algorithms (tools)
- easy storage and transfer of the received information
- modular design for quick installation on site

## SMART THREAT DETECTION



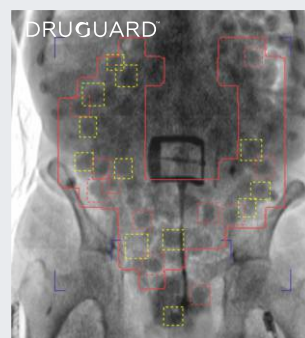
Automatic intellectual detection and indication of all threats on and inside the human body

- elements of clothes
- electronic devices (PCB inside)
- dangerous items (weapons, drugs)
- other items not belonging to the human body



## CLEARPASS DMS

- CLEARPASS DMS can unite X-ray bodyscanners from distant locations into one network keeping track of the total X-ray exposure dose for each inspected person even when the person undergoes a security screening in different locations.
- CLEARPASS DMS synchronizes the information: inspected people's accounts, inspection scan records, and X-ray images between all connected devices.
- CLEARPASS DMS is a set of applications used to run X-ray people screening systems. The system allows operators to inspect people and view their accounts, perform a security screening, and view the obtained X-ray images
- CLEARPASS DMS includes at least three levels of controlled access with the following:
  - An "Operator" level for making scan, creating and filing reports and saving images as required.
  - A "Supervisor" level for supervisory staff to update subject information, create / update operators, review images and file data and monitor all operators' activity and data collected
  - An "Administrator" level to create/update/delete user group members with different levels of access, view audit logs, view images, save images to external drives and generate reports



Automatic drugs detection software algorithms for operator assistance & control



Smart HD images for Increased penetration and resolution