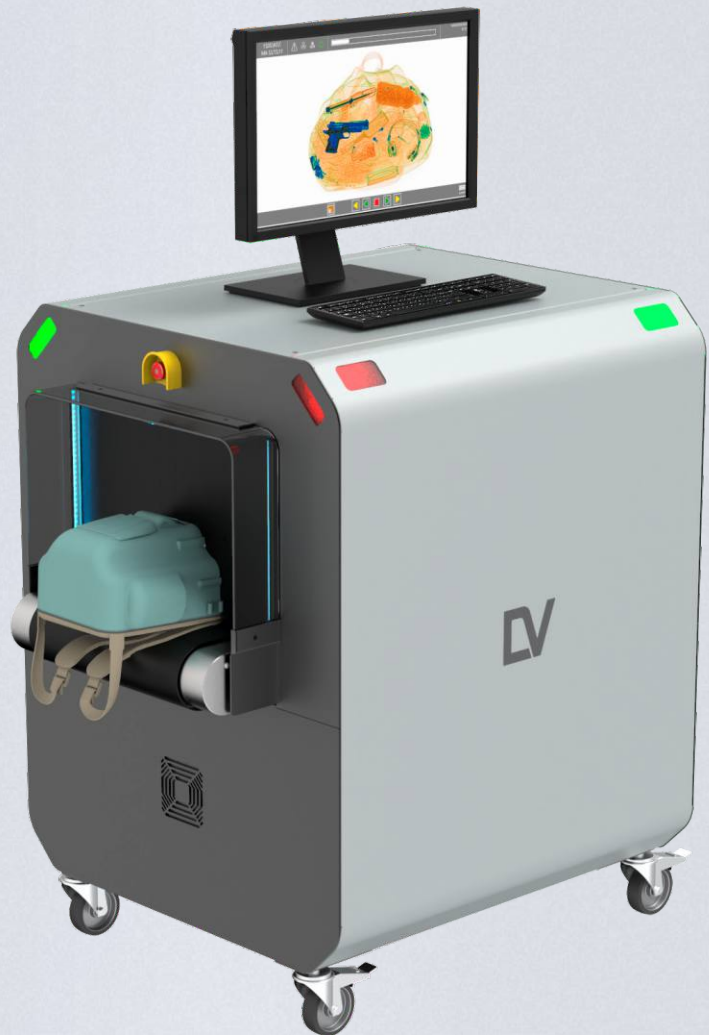




BV 5030

SMALL AND ADVANCED X-RAY INSPECTION SYSTEM FOR QUICK AND EFFECTIVE CONTACT-FREE INSPECTION OF SMALL BAGS, BRIEFCASES AND BACKPACKS



KEY FEATURES

Artificial Intelligence software system for automated detection of firearms, knives and ammunition

The automatic identification of suspicious objects (drugs, explosives)

Availability of 7, 3 colour and infinite colour palettes of images

The fault-tolerant configuration of the acquisition/analysis workstation

Quick start-up and shutdown

Real-time self-diagnostics

The BV 5030 is a high-resolution, single view X-ray baggage inspection system with the ability to automatically detect prohibited objects and threats.

The tunnel with a width of 520 mm and a height of 320 mm is optimal for inspection of baggage, bags, hand luggage and parcels. The System may be used at inspection points of critical infrastructure facilities, law enforcement and security agencies, customs, border guards, hotels, event centers, educational institutions, sports arenas, and other places where reliable and uninterrupted operation of inspection systems is required.

The BV 5030 enables the identification of weapons, explosives, drugs and any other dangerous or prohibited items. Unique colour palettes and touch control provide an exceptional level of operator efficiency.

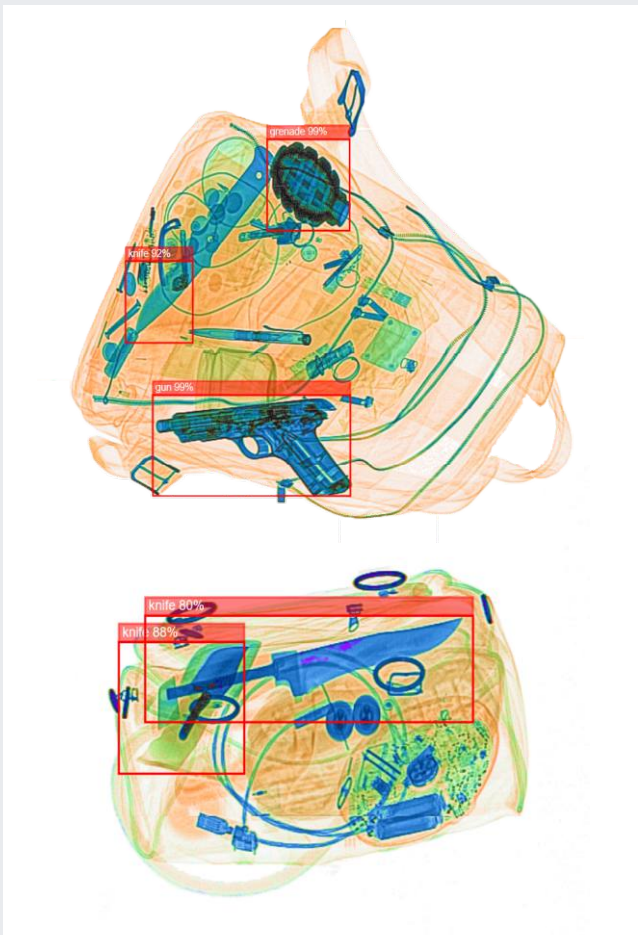
BV 5030

OPTIONS

- Artificial Intelligence software system for automated detection of firearms, knives and ammunition
- Additional (2nd) monitor
- Touchscreen operation functionality
- Ability to connect to a local network
- Remote operator position (up to 25 m)
- Monitor top position
- Rigid type packaging

ACCESORIES

- Roller tables with a length that is multiples of 0.5 m.
- Operator's desk with chair
- Operator's Workstation Stand
- Test objects kit
- Screwed-down feet (4 pcs.)



Examples of Images with Automatic Threat Detection by the AI Software System



GENERAL SPECIFICATIONS

DIMENSIONS

TUNNEL DIMENSIONS	
width	520 mm [20.5 in]
height	320 mm [12.6 in]
OVERALL DIMENSIONS (MAX)	
width	750 mm [29.5 in]
height	1200 mm [47.2 in]
length	1240 mm [48.8 in]
WEIGHT (MAXIMUM)	360 kg [794 lbs]

CONVEYOR BELT

Maximum distributed load on the conveyor belt	160 kg [353 lbs]
Conveyor height	713 mm [28.1 in]
Conveyor speed	0.22±0.03 m/s [43.3 ft/min]

X-RAY SOURCE

Anode voltage	160 kV
Beam direction	Diagonally upward

X-RAY DETECTOR

Detective ability for copper wire	0.08 mm (40 AWG)
Penetration on steel	36 mm guaranteed 37 mm typical
Spatial resolution, line pairs per mm	1.0 in the direction of scanning 1.0 along the detector

POWER SUPPLY

Line voltage	230 VAC ± 10% / 120 VAC ± 5%
Line frequency	50/60 Hz
Power consumption	Max 0.9 kVA

ENVIRONMENTAL REQUIREMENTS

Operation:	
- Ambient temperature	0 °C to +40 °C
- Maximum relative humidity	Up to 90%, non-condensing