

# BV 160180

ADVANCED X-RAY INSPECTION  
SYSTEM FOR EFFECTIVE SCREENING  
OF MID-SIZE CARGO, LARGE BAGGAGE  
AND PACKAGES



## KEY FEATURES

- Large tunnel
- Increased load capacity
- The automatic identification of suspicious objects (drugs, explosives)
- Availability of 7, 3 colour and infinite colour palettes of images
- The fault-tolerant configuration of the acquisition/analysis workstation
- Quick start-up and shutdown
- Real-time self-diagnostics

The BV 160180 is a high-resolution, single view X-ray baggage inspection system with the ability to automatically detect prohibited objects and threats.

The tunnel with a width of 68.9 in and a height of 72.8 in is optimal for inspection of oversize baggage, cargo and other items. The System may be used at inspection points of critical infrastructure facilities, airports, customs, border guards, and other places where reliable and uninterrupted operation of inspection systems is required.

The BV 160180 enables the identification of weapons, explosives, drugs and any other dangerous or prohibited items. Unique colour palettes and touch control provide an exceptional level of operator efficiency.



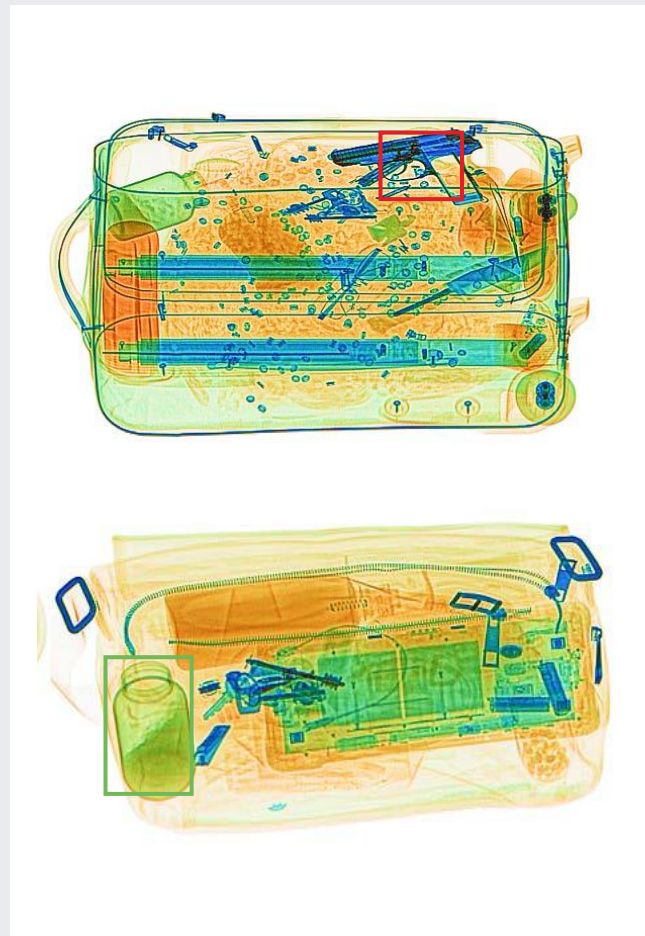
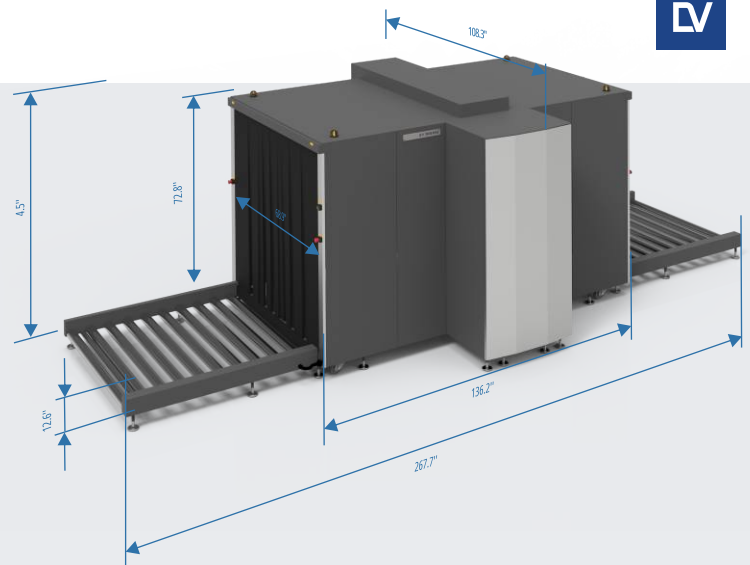
# BV 160180

## OPTIONS

- Additional (2nd) monitor
- Touchscreen operation functionality
- Ability to connect to a local network
- Remote operation position (up to 25 m)

## ACCESSORIES

- Operator's desk with chair
- Operator's workstation stand
- Test objects kit



Examples of Images with Automatic Threat Detection by the AI Software System

## GENERAL SPECIFICATIONS

### DIMENSIONS

TUNNEL DIMENSIONS	
width	68.9 in
height	72.8 in
OVERALL DIMENSIONS (MAX)	
width	108.3 in
height	94.5 in
length	267.7 in
WEIGHT (MAXIMUM)	6614 lbs

### CONVEYOR BELT

Maximum distributed load on the conveyor belt	6614 lbs
Conveyor height	12.8 in
Conveyor speed	43.3 ft/min

### X-RAY SOURCE

Anode voltage	200 kV
Beam direction	Diagonally sideward

### X-RAY DETECTOR

Detective ability for copper wire	0.1 mm (36 AWG)
Penetration on steel	44 mm guaranteed 46 mm typical

### POWER SUPPLY

Line voltage	230 / 120 VAC
Line frequency	50 / 60 Hz
Power consumption	Max 3.0 kVA

### ENVIRONMENTAL REQUIREMENTS

Operation/ Storage:	
- Ambient temperature	32 °F to 104 °F
- Maximum relative humidity	Up to 90%, non-condensing

