



# BV 160180

ADVANCED X-RAY INSPECTION SYSTEM FOR EFFECTIVE SCREENING OF MID-SIZE CARGO, LARGE BAGGAGE AND PACKAGES



## KEY FEATURES

- Large tunnel
- Increased load capacity
- The automatic identification of suspicious objects (drugs, explosives)
- Availability of 7, 3 colour and infinite colour palettes of images
- The fault-tolerant configuration of the acquisition/analysis workstation
- Quick start-up and shutdown
- Real-time self-diagnostics

The BV 160180 is a high-resolution, single view X-ray baggage inspection system with the ability to automatically detect prohibited objects and threats.

The tunnel with a width of 1750 mm and a height of 1850 mm is optimal for inspection of oversize baggage, cargo and other items. The System may be used at inspection points of critical infrastructure facilities, airports, customs, border guards, and other places where reliable and uninterrupted operation of inspection systems is required.

The BV 160180 enables the identification of weapons, explosives, drugs and any other dangerous or prohibited items. Unique colour palettes and touch control provide an exceptional level of operator efficiency.

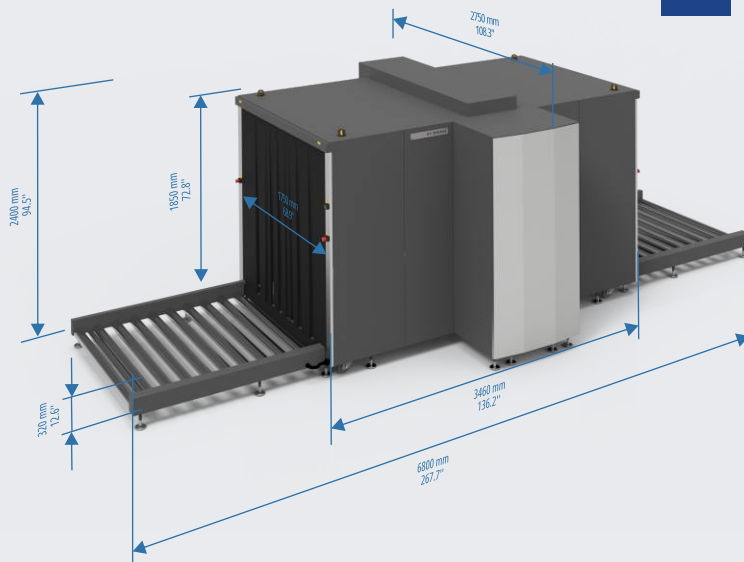
# BV 160180

## OPTIONS

- Additional (2nd) monitor
- Touchscreen operation functionality
- Ability to connect to a local network
- Remote operator position (up to 25 m)

## ACCESSORIES

- Operator's desk with chair
- Operator's workstation stand
- Test objects kit



## GENERAL SPECIFICATIONS

### DIMENSIONS

TUNNEL DIMENSIONS	
width	1750 mm [68.9 in]
height	1850 mm [72.8 in]
OVERALL DIMENSIONS (MAX)	
width	2750 mm [108.3 in]
height	2400 mm [94.5 in]
length	6800 mm [267.7 in]
WEIGHT (MAXIMUM)	3000 kg [6614 lbs]

### CONVEYOR BELT

Maximum distributed load on the conveyor belt	3000 kg [6614 lbs]
Conveyor height	320 mm [12.8 in]
Conveyor speed	0.22±0.03 m/s [43.3 ft/min]

### X-RAY SOURCE

Anode voltage	200 kV
Beam direction	Diagonally sideward

### X-RAY DETECTOR

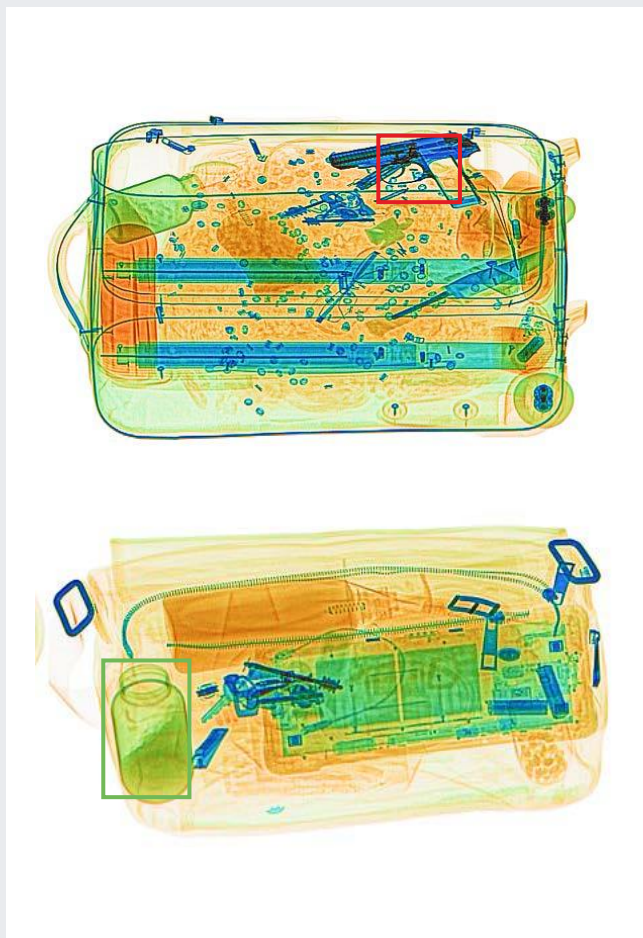
Detective ability for copper wire	0.1 mm (36 AWG)
Penetration on steel	44 mm guaranteed 46 mm typical

### POWER SUPPLY

Line voltage	230 VAC ± 10%/120 VAC ± 5%
Line frequency	50/60 Hz
Power consumption	Max 3.0 kVA

### ENVIRONMENTAL REQUIREMENTS

Operation/ Storage:	
- Ambient temperature	0 °C to +40 °C
- Maximum relative humidity	Up to 90%, non-condensing



Examples of Images with Automatic Threat Detection by the AI Software System