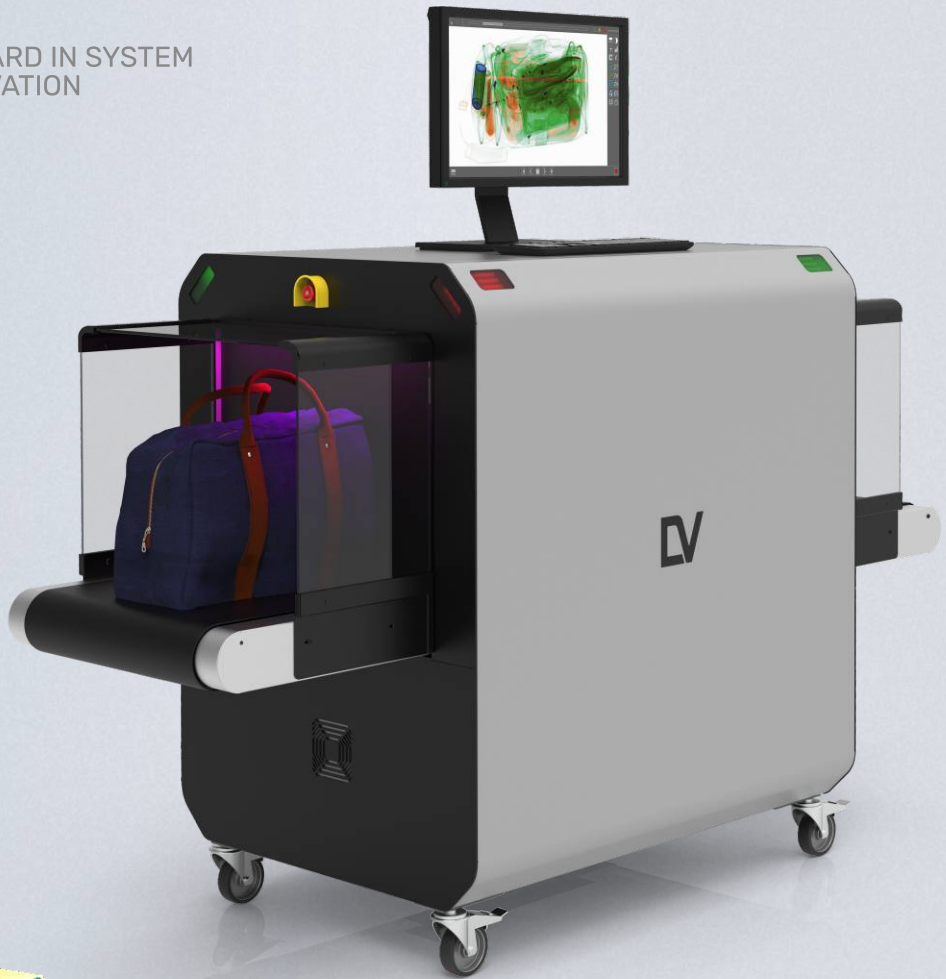




BV 6045

A QUANTUM STEP FORWARD IN SYSTEM AVAILABILITY AND INNOVATION



KEY FEATURES

- Modular Architecture
- Colour Solutions
- Telemetry (predictive analytics)
- Artificial Intelligence software system for automated detection of firearms, knives and ammunition
- Automatic identification of suspicious objects (drugs, explosives)
- Availability of 7, 3 colour and infinite colour palettes of images

BV 6045 is a high-resolution, single view X-ray baggage inspection system with the ability to automatically detect prohibited objects and threats.

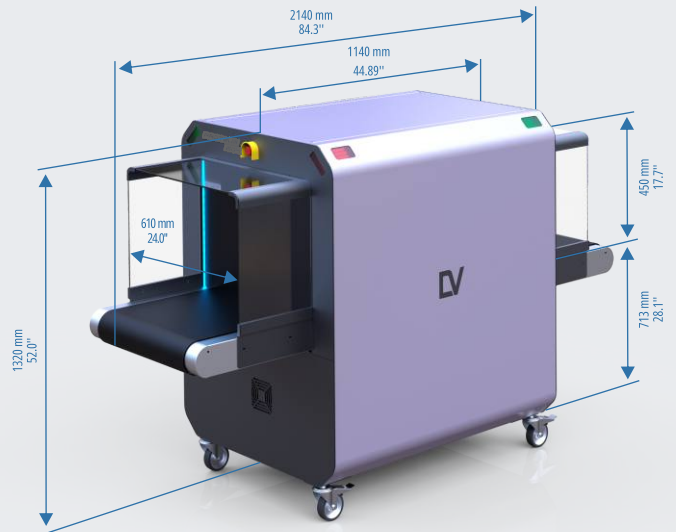
The tunnel with a width of 610 mm and a height of 450 mm is optimal for inspection of baggage, bags, hand luggage and parcels. The System may be used at inspection points of critical infrastructure facilities, law enforcement and security agencies, customs, border guards, hotels, event centers, educational institutions, sports arenas, and other places where reliable and uninterrupted operation of inspection systems is required.

BV 6045 enables the identification of weapons, explosives, drugs and any other dangerous or prohibited items. Unique colour palettes and touch control provide an exceptional level of operator efficiency.

BV 6045

OPTIONS

- Automatic selection of suspicious objects (such as explosives, drugs, Impenetrable areas) using Zeff and optical density
- TIP software for monitoring operator vigilance
- Secure login
- Multi-level user access with the ability to administer users, roles and access level
- Viewing X-ray images from a previous session
- Quick view of the last 10 images (configurable parameter)
- Bi-directional scanning
- Modes of operation: scanning with a stop of the conveyor after each object or without stopping, with the possibility of returning the object after scanning
- Automatic diagnostics of the System and individual units performance
- Automatic warming up of the X-ray generator during prolonged idle time (no warming up is required during daily operation of the System)
- Automatic storage of X-ray images in the archive
- Baggage counter
- Display of date and time, unit serial number and operator ID Multilingual interface
- Possibility of choice by the operator of 3, 7-colour or infinite colour palette
- Display of software version and serial number of the System
- Display of user login time and duration of the current session



GENERAL SPECIFICATIONS

DIMENSIONS

TUNNEL DIMENSIONS	
width	610 mm [24.0 in]
height	450 mm [17.7 in]
OVERALL DIMENSIONS (MAX)	
width	845 mm [33.3 in]
height	1325 mm [52.2 in]
length	2140 mm [84.3 in]
WEIGHT (MAXIMUM)	480 kg [1058 lbs]

CONVEYOR BELT

Maximum distributed load on the conveyor belt	180 kg [397 lbs]
Conveyor height	713 mm [28 in]
Conveyor speed	0.22±0.03 m/s [43.3 ft/min]

X-RAY SOURCE

Anode voltage	160 kV
Beam direction	Diagonally upward

X-RAY DETECTOR

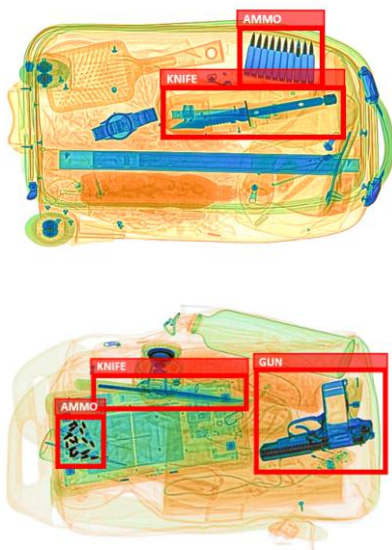
Detective ability for copper wire	0.08 mm (40 AWG)	
Penetration on steel	36 mm guaranteed 37 mm typical	
Spatial resolution, line pairs per mm	1.0 in the direction of scanning	1.0 along the detector

POWER SUPPLY

Line voltage	230 VAC ± 10%/120 VAC ± 5%
Line frequency	50/60 Hz
Power consumption	Max 0.9 kVA

ENVIRONMENTAL REQUIREMENTS

Operation:	
- Ambient temperature	0 °C to +40 °C
- Maximum relative humidity	Up to 90%, non-condensing



Examples of Images with Automatic Threat Detection by the AI Software System