

CLEARPASS C.I.

COMPACT PARTIAL BODY SCANNING SYSTEM



KEY FEATURES

- Superior high quality images
- Fastest scan acquisition time in the industry
- Patented advanced contraband detection software
- Automatic dose selection based on BMI
- Mobile through standard doorway
- Small footprint (9.4 sf. / 0.85m²)
- Easy, one person plug & play set up
- Advanced operator usage data reporting software
- ANSI/HPS N43.17-2009 Class B – partial body scanner

CLEARPASS C.I. the most compact, mobile body scanner on the market. Specifically designed to detect contraband and produce a high resolution image to identify threats within the human body, focusing specifically on the torso area.

CLEARPASS C.I. builds on LINEV Systems legacy of industry leading image quality and resolution delivering the most effective solution for the detection of internally concealed drugs, weapons, metal objects, and electronic devices.



CLEARPASS C.I.



**NARCOTICS
IN BODY CAVITIES**



WEAPONS



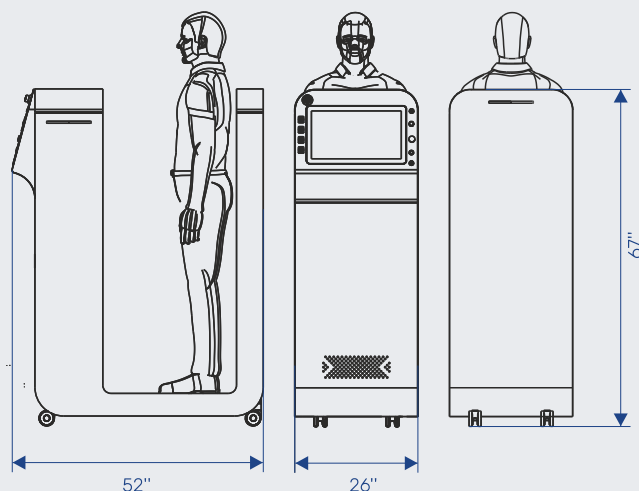
**EXPLOSIVES AND
AMMUNITION**



**CERAMIC AND
PLASTIC BLADES**

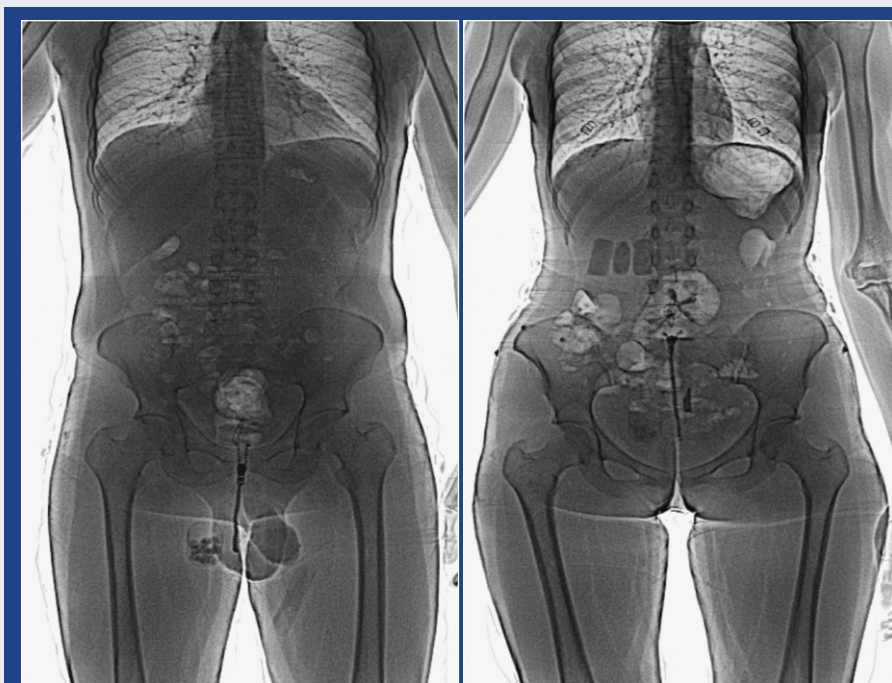


**ELECTRONICS AND
MINIATURE PHONES**



OPTIONS

- Software Upgrade
- Fingerprint Scanner
- Bar code Reader
- Passport Reader
- Facial Recognition Camera
- Intercom System
- Touchscreen Panels
- Laser Printer
- Multi-Operator Function
- Network Integration



GENERAL SPECIFICATIONS

| | |
|---------------------------|-----------------------|
| Scanner Dimensions | 52" L x 26" W x 67" H |
| Scan Area | 19.7"H x 14.2" W |
| Weight Capacity | Max 660 lbs |
| Power Requirements | 120VAC/20amp |
| Select-able Scan Settings | 0.25 - 1.0 µSv |
| Scan and Image Time | 2 - 4 seconds |
| Consumption | Max 1 kVA |
| Minimum Throughput | 240 scans per hour |
| Wire Detectability | Up to 40 AWG |
| Dose Per Scan | 0.27 - 10 µSv |



Meets/Exceeds IEEE N42.47-2010 ANSI for measuring the imaging performance of X-ray and Gamma-ray Systems for Security Screening of Humans

