

BV 6045DV

OPTIMAL DUAL VIEW SOLUTION
FOR QUICK AND ACCURATE INSPECTION
OF PARCELS, SMALL AND
MID-SIZE BAGGAGE



KEY FEATURES

Dual-view technology

Artificial Intelligence software system for automated detection of firearms, knives and ammunition

The automatic identification of suspicious objects

Availability of 7-, 3-colour and infinite colour palettes of images

The fault-tolerant configuration of the acquisition/analysis workstation

The BV 6045DV is a high-resolution, dual view X-ray baggage inspection system with the ability to automatically detect suspicious objects and threats.

The dual-view system means that the operator can simultaneously view two separate images (displayed at a 90-degree angle relative to the other), thus giving a more complete view of the object being scanned and reducing the need for repositioning and rescanning. This enables the operator to detect threats quickly, accurately and comprehensively.

The tunnel with a width of 24.4" and a height of 17.7" is optimal for inspection of baggage, bags, hand luggage and parcels. The System may be used at inspection points of critical infrastructure facilities, law enforcement and security agencies, customs, border guards, hotels, event centers, educational institutions, sports arenas, and other places where reliable and uninterrupted operation of inspection systems is required.

The BV 6045DV allows the operator to identify weapons, explosives, drugs and any other dangerous or prohibited items. Unique colour palettes and touch control provide an exceptional level of operator efficiency.



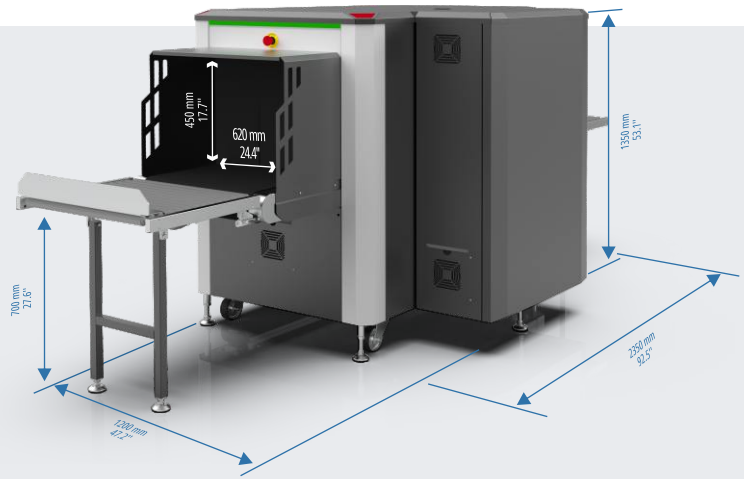
BV 6045DV

OPTIONS

- Artificial Intelligence software system for automated detection of firearms, knives and ammunition
- Touchscreen operation functionality
- Ability to connect to a local network
- Remote operator position (up to 25 m)
- Monitor top position
- Rigid type packaging

ACCESSORIES

- Roller tables with a length that is multiples of 0.5 m.
- Operator's desk with chair
- Operator's Workstation Stand
- Test objects kit
- Screwed-down feet (4 pcs.)



GENERAL SPECIFICATIONS

DIMENSIONS

| TUNNEL DIMENSIONS | |
|--------------------------|-------------------|
| width | 620 mm [24.4 in] |
| height | 450 mm [17.7 in] |
| OVERALL DIMENSIONS (MAX) | |
| width | 1200 mm [47.2 in] |
| height | 1350 mm [53.1 in] |
| length | 2350 mm [92.5 in] |
| WEIGHT (MAXIMUM) | 800 kg [1764 lbs] |

CONVEYOR BELT

| | |
|---|-----------------------------|
| Maximum distributed load on the conveyor belt | 200 kg [441 lbs] |
| Conveyor height | 700 mm [27.6 in] |
| Conveyor speed | 0.22±0.03 m/s [43.3 ft/min] |

X-RAY SOURCE

| | |
|----------------|------------------------------|
| Anode voltage | 160 kV |
| Beam direction | Diagonally upward & sideward |

X-RAY DETECTOR

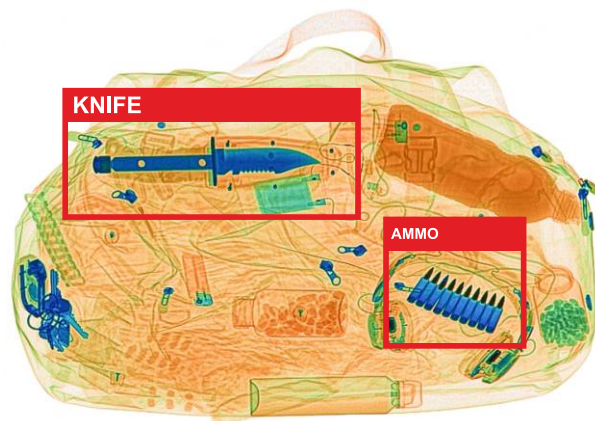
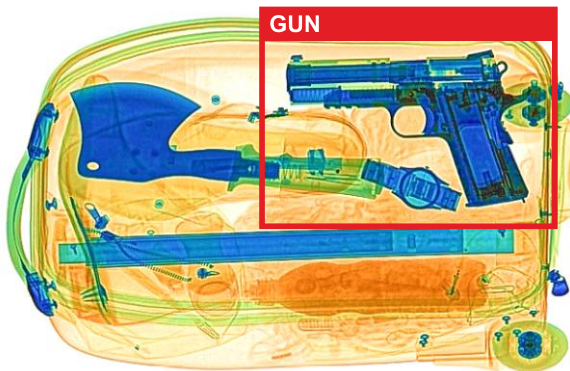
| | |
|---------------------------------------|---|
| Detective ability for copper wire | 0.08 mm (40 AWG) |
| Penetration on steel | 36 mm guaranteed 37 mm typical |
| Spatial resolution, line pairs per mm | 1.0 in the direction of scanning 1.0 along the detector |

POWER SUPPLY

| | |
|-------------------|----------------------------|
| Line voltage | 230 VAC ± 10%/120 VAC ± 5% |
| Line frequency | 50/60 Hz |
| Power consumption | Max 1.2 kVA |

ENVIRONMENTAL REQUIREMENTS

| | |
|-----------------------------|---------------------------|
| Operation: | |
| - Ambient temperature | 0 °C to +40 °C |
| - Maximum relative humidity | Up to 90%, non-condensing |



Examples of Images with Automatic Threat Detection by the AI Software System